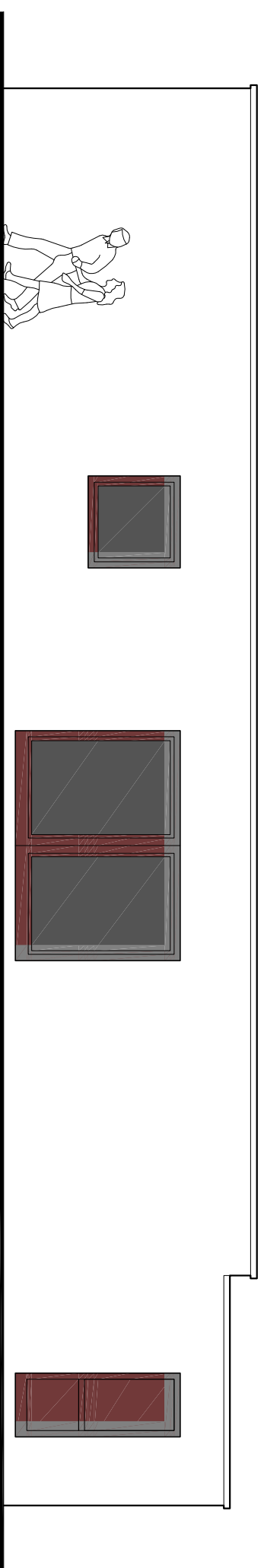
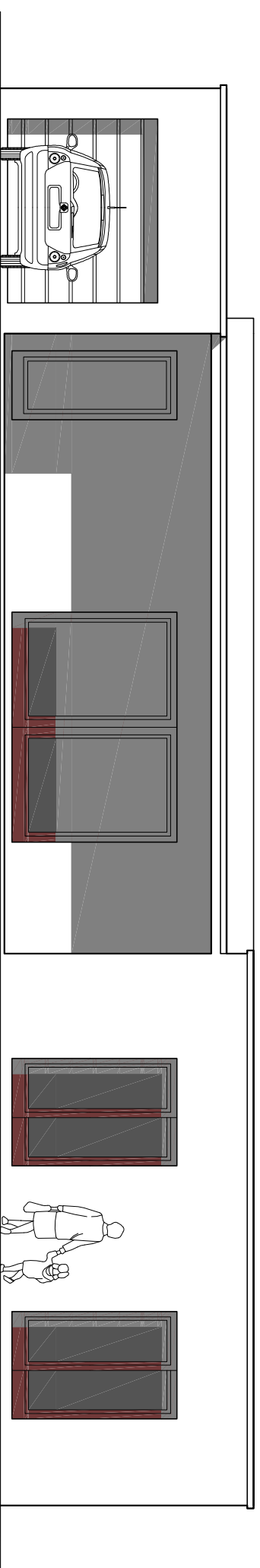


SURFACE HABITABLE	
SEJOUR - CUISINE - REPAS	40,45 m ²
CHAMBRE 1	13,00 m ²
CHAMBRE 2	12,10 m ²
CHAMBRE 3	11,65 m ²
CELLIER	7,61 m ²
ENTREE	4,03 m ²
BAINS	7,08 m ²
WC	1,66 m ²
DEGAGEMENT	3,13 m ²
TOTAL :	100,71 m²



FACADE NORD



FACADE SUD

**Maison Plain Pied 100 m²
PLAN et FACADES**

