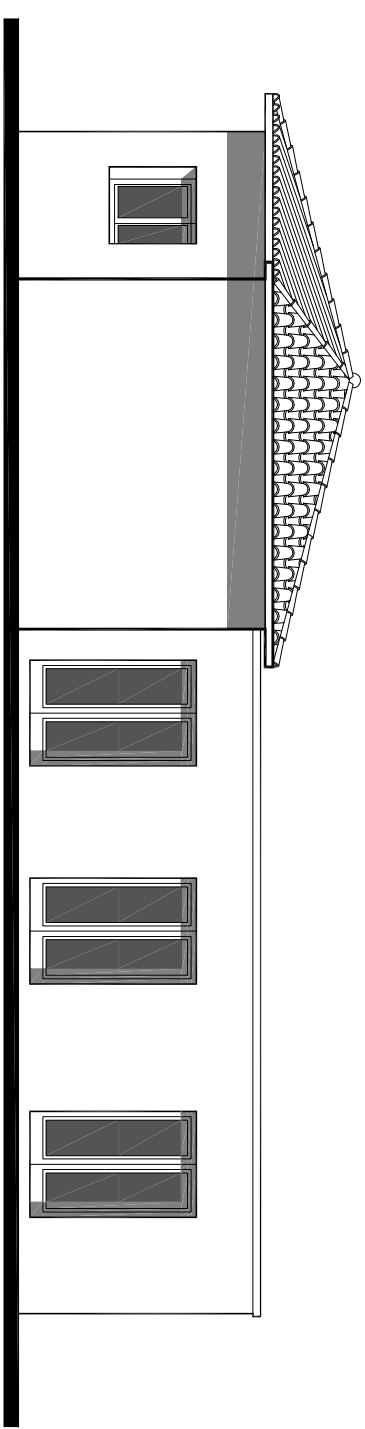
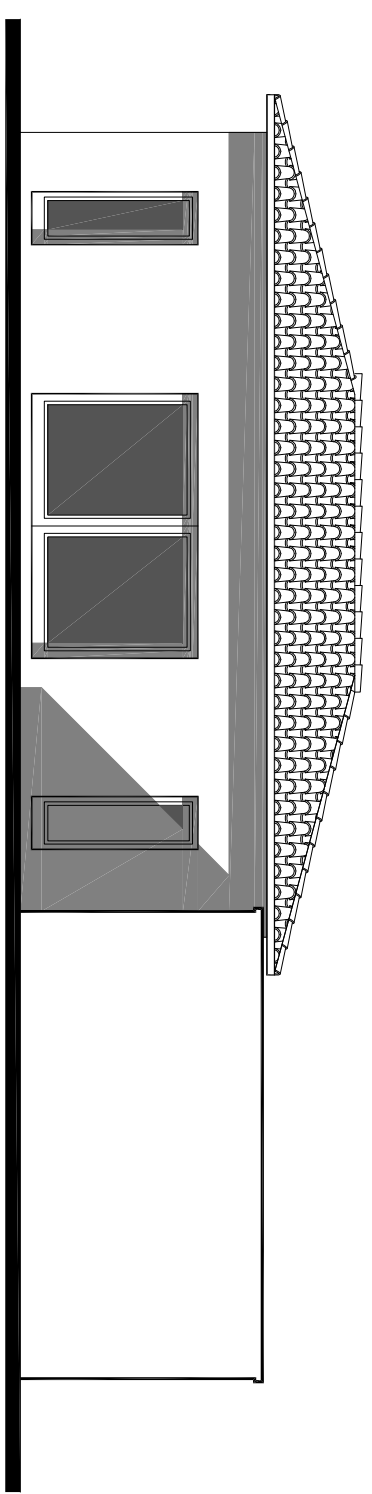




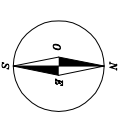
SURFACE HABITABLE	
SEJOUR - CUISINE - REPAS	52,43 m ²
CHAMBRE 1	16,05 m ²
CHAMBRE 2	12,40 m ²
CHAMBRE 3	12,40 m ²
BAINS 1	5,78 m ²
BAINS 2	4,02 m ²
WC	1,77 m ²
CELLIER	5,25 m ²
ENTREE	7,92 m ²
DEGAGEMENT	9,48 m ²
TOTAL :	127,50 m²



FACADE OUEST



FACADE SUD



PLAN MAISON - Plain Pied 127.50 m²